

ORGANIZATION STRUCTURE OF INDIAN RAILWAYS

MINISTER OF RAILWAYS

MINISTER OF STATE FOR RAILWAYS (D)

MINISTER OF STATE FOR RAILWAYS (J)

CHAIRMAN & CEO, RAILWAY BOARD

MEMBER (TRACTION &
ROLLING STOCK)-M/T&RS

MEMBER
INFRASTRUCTURE-
M/INFRA

MEMBER OPERATIONS &
BUSINESS
DEVELOPMENT-M/O&BD

MEMBER FINANCE-
MF

DIRECTOR GENERAL/RHS-DG/RHS
DIRECTOR GENERAL/HR- DG/HR
DIRECTOR GENERAL/ RPF-DG/RPF
DIRECTOR GENERAL/ SAFETY-DG/SAFETY

SECRETARY, RAILWAY BOARD

ZONAL RAILWAYS
(OPEN LINE)

PRODUCTION UNITS

OTHER UNITS

CPSE/CORP &
AUTONOMOUS BODIES/
AUTHORITIES

GENERAL MANAGERS
1. CENTRAL
2. EASTERN
3. EAST CENTRAL
4. EAST COAST
5. NORTHERN
6. NORTH CENTRAL
7. NORTH EASTERN
8. NORTHEAST FRONTIER
9. NORTH WESTERN
10. SOUTHERN
11. SOUTH CENTRAL
12. SOUTH EASTERN
13. SOUTH EAST CENTRAL
14. SOUTH WESTERN
15. WESTERN
16. WEST CENTRAL
17. METRO

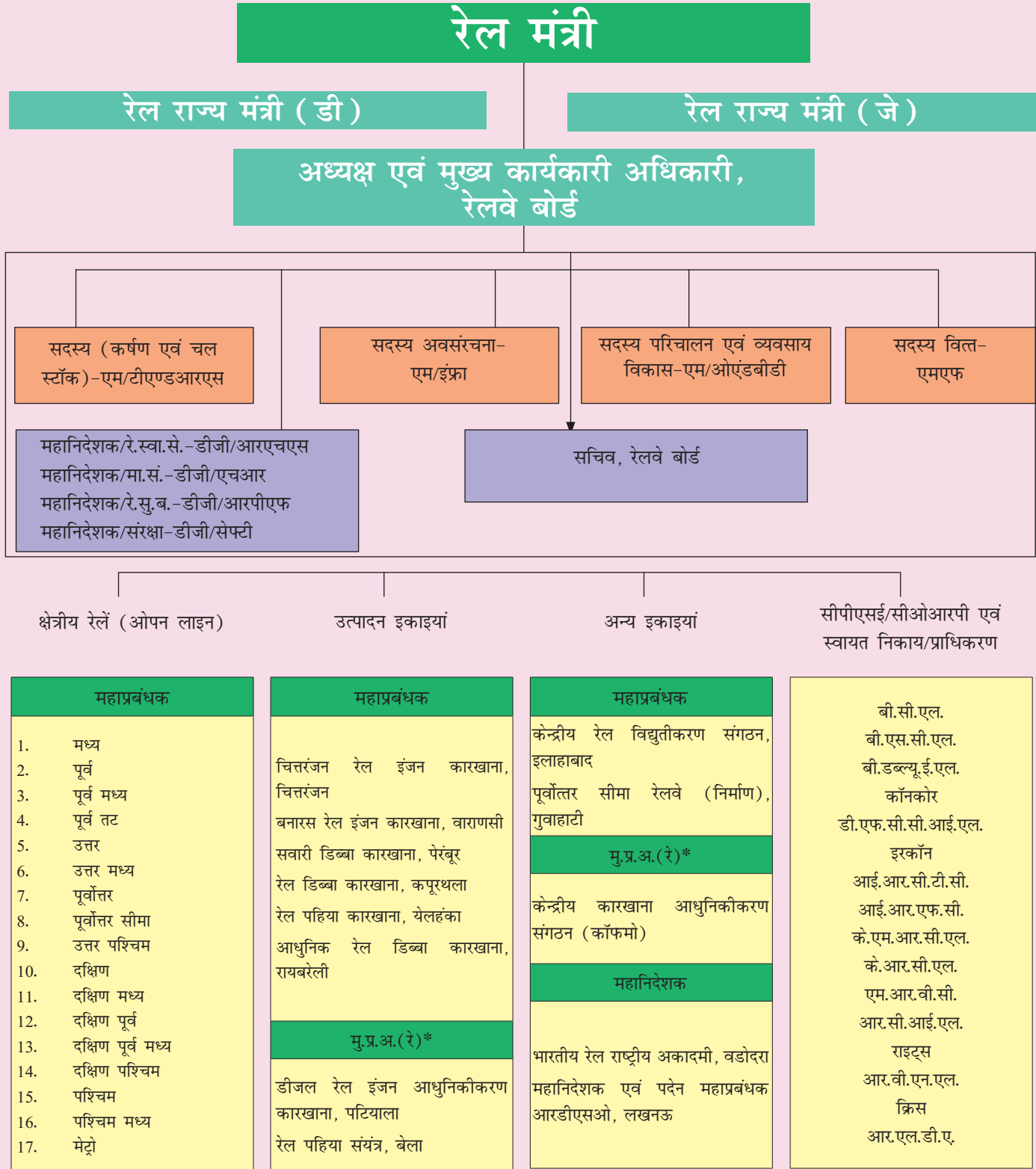
GENERAL MANAGERS
CHITTARANJAN LOCOMOTIVE WORKS, CHITTARANJAN
BANARAS LOCOMOTIVE WORKS, VARANASI
INTEGRAL COACH FACTORY, PERAMBUR
RAIL COACH FACTORY, KAPURTHALA
RAIL WHEEL FACTORY, YELAHANKA
MODERN COACH FACTORY, RAE BARELI
CAO (R)*
DIESEL LOCO MODERNIZATION WORKS,PATIALA
RAIL WHEEL PLANT, BELA

GENERAL MANAGERS
CENTRAL ORGANIZATION FOR RAILWAY ELECTRIFICATION, ALLAHABAD
NF RAILWAY (CONSTRUCTION), GUWAHATI
CAO (R)*
CENTRAL ORGANIZATION FOR MODERNISATION OF WORKSHOPS (COFMOW)
DIRECTOR GENERAL
NATIONAL ACADEMY OF INDIAN RAILWAYS, VADODARA
DG & EX-OFFICIO GM RDSO, LUCKNOW

BCL
BSCL
BWEL
CONCOR
DFCCIL
IRCON
IRCTC
IRFC
KMRCL
KRCL
MRVC
RCIL
RITES
RVNL
CRIS
RLDA

*CHIEF ADMINISTRATIVE OFFICER (RAILWAYS)

भारतीय रेल की संगठन संरचना



* मुख्य प्रशासनिक अधिकारी (रेलें)